



Srishyla Educational Trust (R)

GM INSTITUTE OF TECHNOLOGY

Approved by AICTE | Affiliated to V.T.U.Belgaum | Recognized by Govt. of Karnataka



DEPARTMENT OF ELECTRONICS AND COMMUNICATION ENGINEERING

**Report
on
"3-days Industrial Visit at West Coast Paper
Mill Ltd. and Kalinadi Hydroelectric Project
SUPA DAM, Dandeli"**

**from
16/12/22 to 18/12/22**

Copy!!

Resource Person/s

Mr. Swamy

Technical Engineer

West Coast Paper Mill Ltd

Kalinadi Hydroelectric Project SUPA DAM, Dandeli

Deepika.v.B

Event coordinators

Ms. Deepika V B, Assistant Professor

Mr. Rakesh A, Instructor

[Signature]

Verified by

**Dr. Praveen J
Head of the Department**

GM Institute of Technology
DAVANGERE-577 006

[Signature]

Checked by

**Dr. Sunil Kumar B S
Dean Academics**

**DEAN ACADEMICS
G.M. Institute Of Technology
DAVANGERE-577006.**

[Signature]

Checked by

**Dr. Praveen J
IQAC Director**
GM Institute of Technology
Davangere - 577006

[Signature]

Approved by

**Dr. Sanjay Pande M B
Principal**



Srishyla Educational Trust (R)

GM INSTITUTE OF TECHNOLOGY

Approved by AICTE | Affiliated to V.T.U. Belgaum | Recognized by Govt. of Karnataka



Member of
NASSCOM®

DEPARTMENT OF ELECTRONICS AND COMMUNICATION ENGINEERING

Report on 3-day Industrial visit - "West Coast Paper Mills Ltd. and Kalinadi Hydroelectric Project SUPA DAM, Dandeli"

The Final year 7th A Semester Students of Electronics and Communication Engineering Department visited **"West Coast Paper Mills Limited and Mysore power corporation Limited., Kalinadi Hydroelectric Project SUPA DAM, located at Dandeli"** on 16th December 2022 as a part of Industrial tour permitted by the college between 16th to 18th December 2022.

Ms. Deepika V B and Mr. Rakesh accompanied the students. Students got information regarding the West Coast Paper Mills Limited (WCPM) and Kalinadi Hydroelectric Project SUPA DAM.

The Project Lead of WCPM explained about the Mill to the students is as below:

- WCPM is one of the oldest and the largest producers of papers for printing, writing, and packaging in India and it was Established in 1955.
- The global quality paper produced by the Company serves the needs of innumerable industries in printing, writing, publishing, stationary, notebooks and packaging sectors in India, in the process contributing to the development of the nation.
- WCPM was planned with installation of new two Tissue Machines. However, with sudden surge in the imported pulp prices during the last one year, Tissue manufacture is not economically viable.
- Hence WCPM is planning to revise the scope of MDP with installation of one with Multi-layer Coated Board Machine in place of two Tissue Machines. In the revised concept of Mill Development Plan (MDP), the following proposals are considered.
- WCPM is contemplating Mill Development Plan (MDP) consisting of the following.,
- Installation of new Multi-layer Coated/Uncoated Boards Machine
- Modernisation/ Augmentation of existing paper machines
- Augmentation of Pulp Mill



DEPARTMENT OF ELECTRONICS AND COMMUNICATION ENGINEERING

- Augmentation of Chemical Recovery Island
- Augmentation of Captive Power Plant
- The mill is also equipped with coal-fired boilers for generating the steam required for process, as well as for power generation, as well as turbo alternators for production of power from the steam generated in both the recovery and coal-fired boilers.
- The mill is also equipped with a dedicated water intake and treatment system, as well as a dedicated wastewater collection and treatment system.

The students also visited Mysore power corporation Limited., Kalinadi Hydroelectric Project SUPA DAM., Dandeli and got some information about the DAM and they are listed as below:

- Supa Dam is located in town of Dandeli in Joida Taluk and it was built across the River Kali or Kalinadi by Karnataka Power Corporation Limited.
- This dam has a power house at the foot of this dam with two electric generators. They are of 50 megawatts each. In 1985, the power house was commissioned.
- The dams has live storage capacity of 145 (Thousand Million Cubic Feet) and a catchment area of 1,057 Sq.Kms.
- Quick Facts about the DAM
 1. Built on : River Kali
 2. Type : Earthen Dam with Left Bank spillway
 3. Length: 332 meters
 4. Height: 101 meters
 5. Number of gates: 3
 6. Filling period : From June to November
 7. Depletion period : From November to May
 8. Projects : Hydro electric Power generation project

As a part of Industrial visit, the students also visited some heritage places like etc. near Dandeli.



Slrshyla Educational Trust (R)

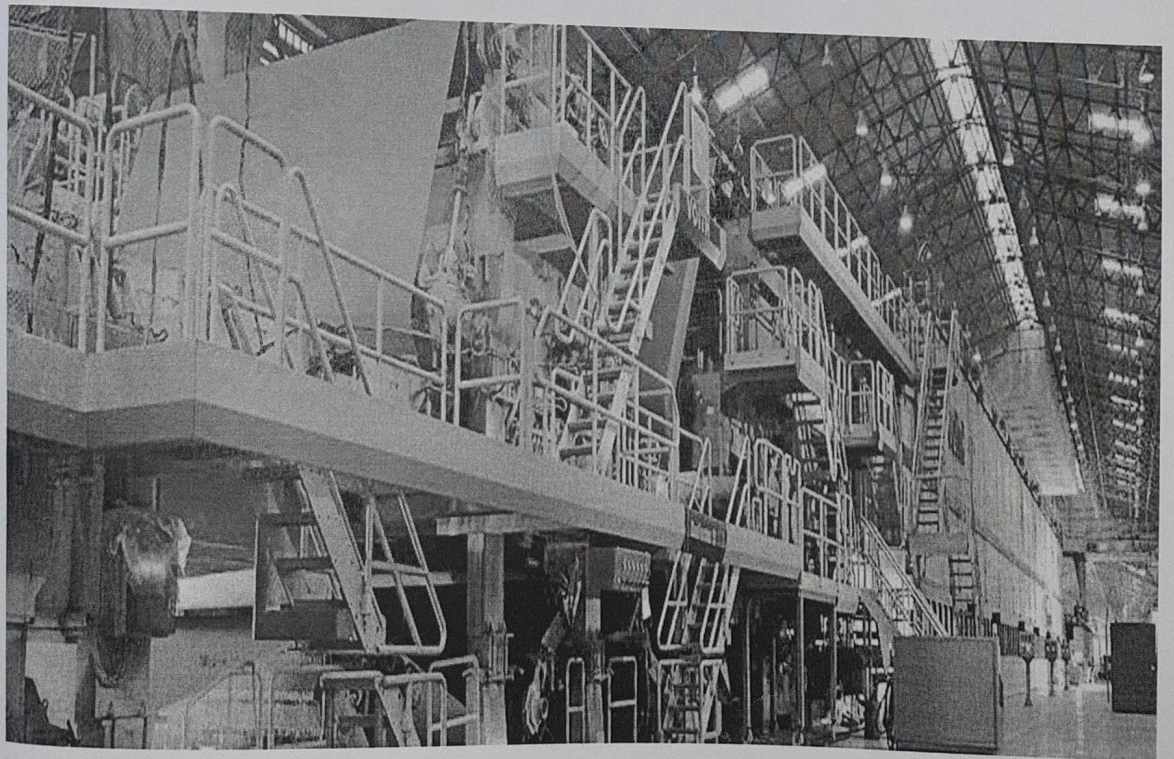
GM INSTITUTE OF TECHNOLOGY

Approved by AICTE | Affiliated to V.T.U. Belgaum | Recognized by Govt. of Karnataka



Member of
NASSCOM®

DEPARTMENT OF ELECTRONICS AND COMMUNICATION ENGINEERING





Srishyla Educational Trust (R)

GM INSTITUTE OF TECHNOLOGY

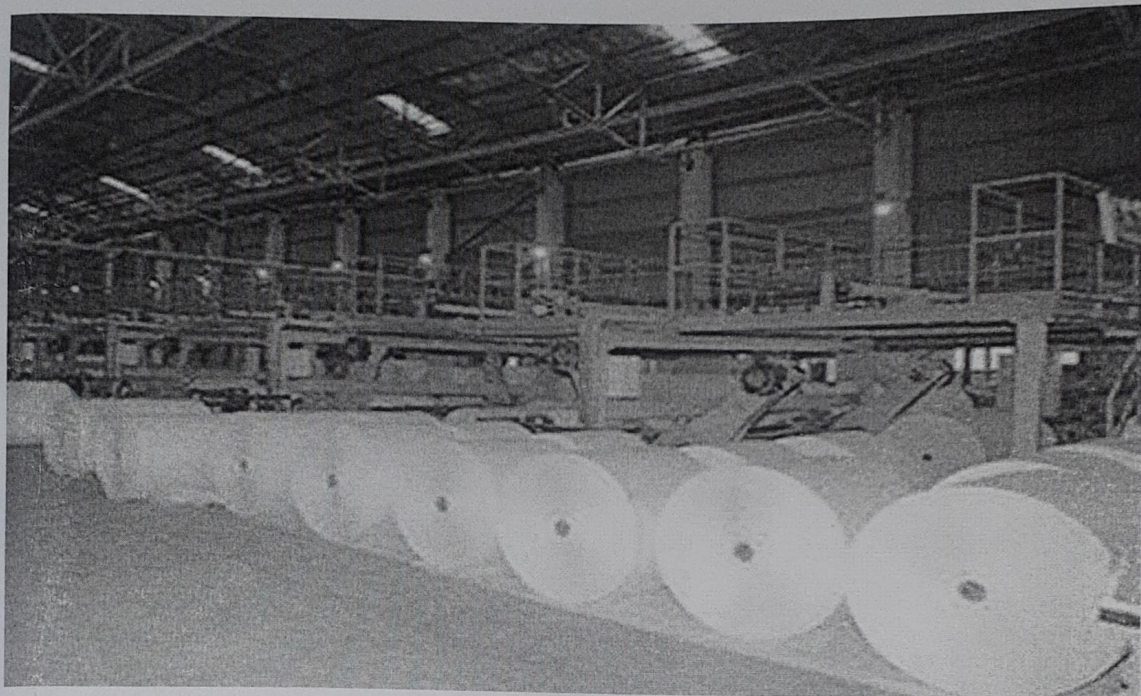
Approved by AICTE | Affiliated to V.T.U.Belgaum | Recognized by Govt. of Karnataka

NBA
NATIONAL BOARD
OF ACCREDITATION
Accredited Programs
CSE/ECE/CE/ME



Member of
NASSCOM®

DEPARTMENT OF ELECTRONICS AND COMMUNICATION ENGINEERING





Srishyia Educational Trust (R)

GM INSTITUTE OF TECHNOLOGY

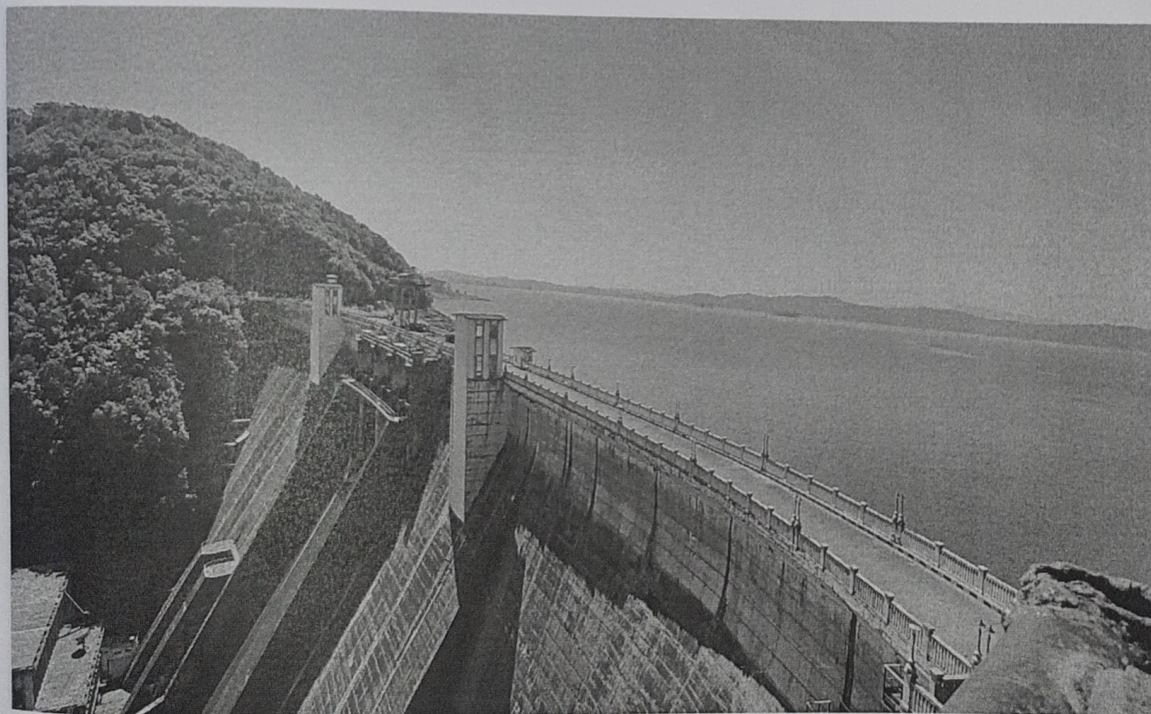
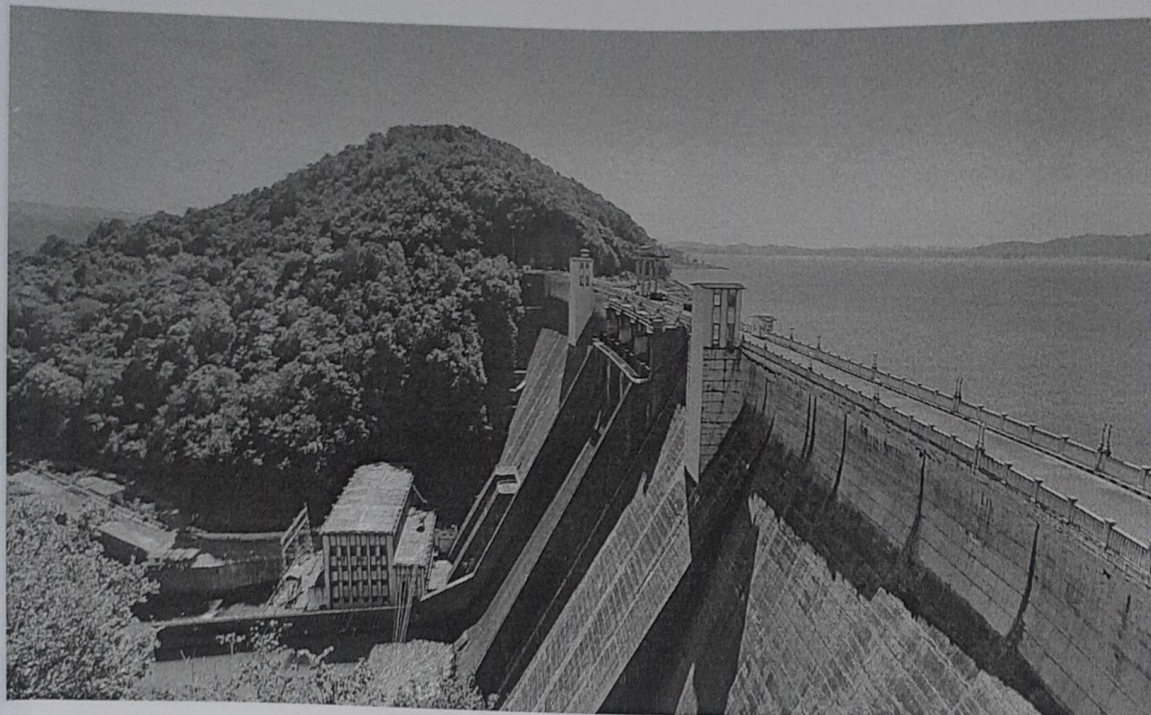
Approved by AICTE | Affiliated to V.T.U.Belgaum | Recognized by Govt. of Karnataka

NBA
NATIONAL BOARD
OF ACCREDITATION
Accredited Programs
CSE/ECE/CE/ME



Member of
NASSCOM

DEPARTMENT OF ELECTRONICS AND COMMUNICATION ENGINEERING





Slrshyla Educational Trust (R)

GM INSTITUTE OF TECHNOLOGY

Approved by AICTE | Affiliated to V.T.U.Belgaum | Recognized by Govt. of Karnataka



Member of NASSCOM®

DEPARTMENT OF ELECTRONICS AND COMMUNICATION ENGINEERING

